

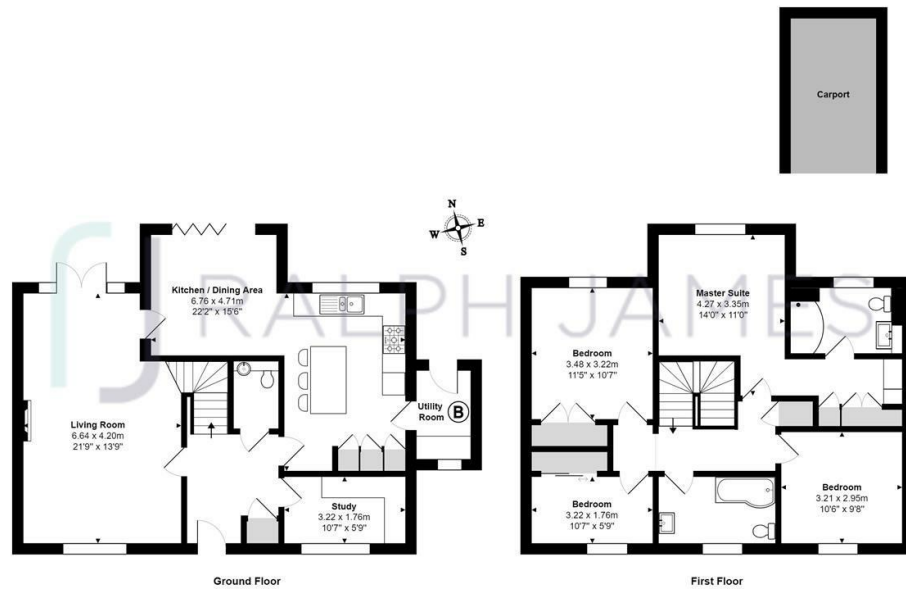
Mill Street Redhill Surrey

£700,000 - £750,000



RALPH JAMES

FLOOR PLANS



Mill Street, Redhill

Total Area: 148.2 m² ... 1595 ft² (excluding carport)
FOR ILLUSTRATIVE PURPOSES ONLY.

Whilst every attempt has been made to ensure the accuracy of the floor plan shown, all measurements, positioning, fixtures, features, fittings and any other data shown are an approximate interpretation for illustrative purposes only and are not to scale.

No responsibility is taken for any error, omission, mis-statement or use of data shown.

The above statement applies to both "Still Moving London LTD" and the Company or individual displaying this floor plan.

Unauthorised reproduction prohibited.

© Still Moving London LTD (www.stillmoving.london)

RALPH JAMES



IN A NUTSHELL



Pretty garden



Large living room & separate study



Open plan kitchen/dining



Four spacious bedrooms



Family bathroom, master en-suite & downstairs W/C



Parking & car port



WHAT'S GREAT?

GUIDE PRICE: £700,000-£750,000

This Impressive home is located in just a short walk from Redhill town and station, with an excellent selection of schools within the surrounding area ranging from nursery to college as well as M25 access less than a 10 minute drive away.

Beautifully decorated throughout, the light finishing's and large windows make this home feel bright and airy all year round. With it's large open rooms and open plan layout, it's the dream home for those who enjoy being social with family and friends. Stepping into the generously sized hallway you have a cupboard for coats and a W/C. TO your immediate right is the study, with a built-in desk and draws, next along the hall is the open plan kitchen/dining room.

The white gloss finish is sleek and elegant, with a large island in the middle giving you even more cupboard space, the children can perch with a snack as they do their homework and you prepare dinner. Built in appliances have helped to utilize the space which offers you even more room to add in additional furnishings.

Once dinner is served you can enjoy it up the dining table and admire the views of the garden through the bi-fold doors. During the summer you can open the doors to combine both inside and out whilst letting in fresh air and a gentle breeze. The living room is also impressive, with patio doors leading out to the patio.

Upstairs there are four bedrooms, three of which include built-in wardrobes. The master bedroom is gorgeous, with it's own walk in dressing room that leads you to the en-suite. Both bathrooms include a large tub, where you can relax and unwind with a glass of wine as you soak away in the bubbles and overhead showers are ideal for those rushed mornings.

Outside you have a pretty garden with a patio for the garden furniture, flower beds adding a pop of colour and side access out to the car port.



Ashley likes it
because....

"This is a gorgeous home, it's beautiful finish allows you to move straight in without much fuss and make it your own. As soon as you step through the door you can tell it is a great family home, with spacious rooms and a modern layout."

SELLER'S SECRET

Coming soon...

CLOSE TO HOME

Redhill Station 0.7m

Earlswood Station 0.7m

Reigate High Street 1.6m

Gatwick Airport 5.6m

Dunottar School 0.9m

Reigate School 1.2m

Hatchlands school 0.5m

St Johns School 0.5m



RALPH JAMES



39 High Street | Redhill | RH1 1RX | 01737 765555
admin@ralphjames.co.uk | www.ralphjames.co.uk

To buy or not to buy...
